



# DISHWASHER S-120C 400/50/3N DD (WITH BREAK TANK AND RAIN PUMP)

3 kW wash tank and 9kW boiler

1302349



WARE WASHING  
PASS-THROUGH DISHWASHERS

## SALES DESCRIPTION

Commercial pass-through dishwasher with a max. loading height of up to 400 mm and 3 wash cycles with thermal cycle delay option included. A stainless steel, top of tank filter system is also included as standard.

Double skinned hood.

- ✓ Sturdy and reliable.
- ✓ Optimal washing results.
- ✓ Double skinned hood: thermal and acoustic insulation.
- ✓ Tank capacity above average: it takes more time to saturate the water of debris.
- ✓ Full optional list.
- ✓ **WRAS approved versions available.**
- ✓ **3-phase models only.**

## FEATURES AND BENEFITS

- ✓ Suitable for straight in line and corner situations.
- ✓ Intuitive use.
- ✓ Top and bottom wash arms.
- ✓ Catering grade stainless steel construction (AISI 304 2B).
- ✓ Its double skinned hood ensures thermal and acoustic insulation and energy saving.
- ✓ Lifting bar activated hood opening.
- ✓ Magnetic hood micro-switch.
- ✓ Hood activated, auto cycle start.
- ✓ Rounded finish interior ensures no accumulation of dirt.
- ✓ Electronic, watertight, high-performance control panel.
- ✓ Wash and rinse temperature display.
- ✓ Precision positioned water jets guarantee optimum washing result for even the most stubbornly stained glasses.
- ✓ Easy to assemble, boltless rinse spray arms.
- ✓ Completely rounded, stainless steel wire rack support and guide.
- ✓ Double filter system provides effective wash pump protection.
- ✓ Easily removable dispersers and filters for cleaning and maintenance. No tools needed.
- ✓ Equipped with adjustable thermostats in tank and boiler and safety thermostat in boiler.
- ✓ Height-adjustable feet.
- ✓ Designed for quick and easy maintenance. Fast access to components for on-site maintenance.
- ✓ 100% tested.

## INCLUDES

- ✓ Rinse aid pump.
- ✓ Detergent dosing equipment.
- ✓ 1 open basket.
- ✓ 1 plate basket.
- ✓ 1 cutlery basket.
- ✓ Stainless steel top-of-tank filter set.

## ACCESSORIES

- Dosing equipments similar
- Tables for dishwashers P/X/S (pass-through model)
- Manual water softeners
- Automatic water softeners
- 500 x 500 mm. baskets
- Inserts, supplements &
- High Feet Kit
- Booster pump kit



[www.sammic.co.uk](http://www.sammic.co.uk)

Food Service Equipment Manufacturer

Unit 2, Trevanah Road  
Troon Industrial Park  
LE4 9LS - Leicester

[uksales@sammic.com](mailto:uksales@sammic.com)  
Tel.: +44 0116 246 1900



Project

Date

Item

Qty

Approved

product sheet  
updated 04/12/2019



# DISHWASHER S-120C 400/50/3N DD (WITH BREAK TANK AND RAIN PUMP)

3 kW wash tank and 9kW boiler



1302349

## SPECIFICATIONS

- Basket dimensions: 500 mm x 500 mm
- Maximum glass height: 400 mm
- Cycles: 3
- Cycle duration: 60 " / 120 " / 180 "
- Production baskets/hour: 60 / 30 / 20
- ✓ Boiler capacity: 10 l
- ✓ Wash tank capacity: 40 l
- ✓ Water consumption/cycle: 3.5 l
- ✓ **Electrical supply:** 400 V / 50 Hz / 3 ~ (28.4 A - 16.4 A)
- ✓ Plug: -
- Loading
- ✓ Pump: 1500 W / 2 Hp
- ✓ Tank: 3000 W
- ✓ Boiler: 9000 W
- ✓ Total loading: 10500 W

### External dimensions (WxDxH)

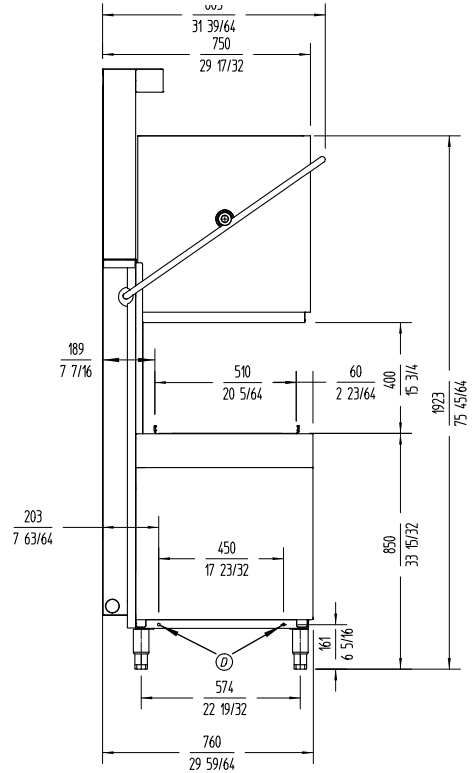
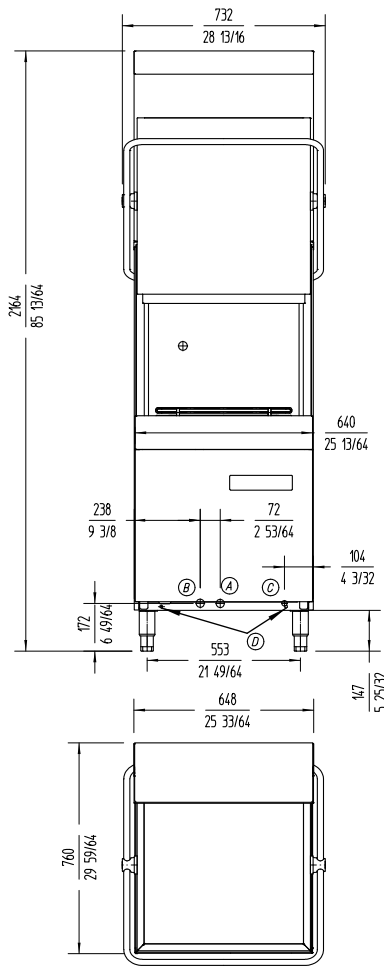
- ✓ Width: 640 mm (: 732 mm)
- ✓ Depth: 756 mm (: 860 mm)
- ✓ Height: 1920 mm / 1468 mm

Net weight: 138 Kg

### Crated dimensions

760 x 860 x 1470 mm

Gross weight: 130 Kg.



WARE WASHING  
PASS-THROUGH DISHWASHERS



[www.sammic.co.uk](http://www.sammic.co.uk)

Food Service Equipment Manufacturer

Unit 2, Trevanah Road  
Troon Industrial Park  
LE4 9LS - Leicester

uksales@sammic.com  
Tel.: +44 0116 246 1900



Project

Date

Item

Qty

Approved

product sheet  
updated 04/12/2019